







01



02



03



04



05



06



07



08



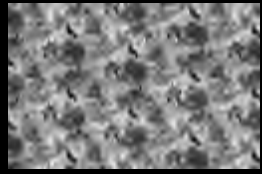
09



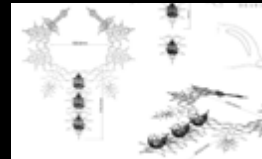
10



11a



11b



12



13



14



15



16



17



18



19



21



22



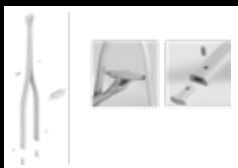
23



24



25



26



27



28



29



30



31



32



33

01 CICELY PEERS  
3D Design  
Thrown Contemporary Ceramics Award

02 YING (VICKY) HUANG  
Textile Design  
The Clothworkers' Company Printed  
Textile Design Award

03 LOIS DAVIES  
Surface Pattern Design  
The Romo Award for Innovation in  
Design and Colour

04 DANIEL EMBLETON  
Textiles and Surface Design  
The Liberty Fabrics Studio Award

05 KEELY RUSSELL  
Textile Design  
Silentnight Sleep Design Award

06 Al Bates  
Textiles  
Colour In Design Award: Week 1 Disciplines

07 Andrea Gonzales  
Textile Design  
The Habitat Future Design Award:  
Textiles & Surface Pattern Design

08 Anna Burke  
Textiles Design & Innovation  
The John Lewis & Partners Award for Design  
and Innovation: Week 1 Disciplines

09 Jiaxuan Zhong  
Jewellery, Material and Design  
Hallmark Award: Week 1 Disciplines

10 Olivia Riley  
Textile Design  
Wilko Retail Design Award - Surface Pattern  
and Textiles

11a Caitlin Stracey  
Textile Design  
Sanderson Design Group Award

11b Robyn Gauld  
Design for Printed Textiles  
Sanderson Design Group Award

12 Brigita Bivainyte  
Silversmithing and Jewellery Design  
The Goldsmiths' Company Award

13 Finlay Grant  
Jewellery & Metal Design  
The Goldsmiths' Company Awards

14 Sabine Buhain  
Animation  
Aardman Academy The Screening Award

15 Lucy Turner  
Textile Design  
Mollie Makes Award

16 Ashleigh Blades  
Illustration with Animation  
The Affinity Digital Design Award

17 Olivia Latham  
Design For Industry  
The Joseph Stannah Award

18 Nick Fitzpatrick  
Product Design  
Lakeland Home Design Award

19 Matthew Shepherd  
Product Design  
Kenwood Appliances Award

20 Alex D'Souza  
Product Design Engineering Bsc  
Joseph Joseph - Brilliantly Useful Design Award

21 Calum Gambrill  
Product & Industrial Design  
Ford Design Award

22 Alice McCutcheon  
Industrial Design & Technology  
Cambridge Consultants Breakthrough Design Award

23 Giles Fearon  
3D Design  
The Belmond Award

24 Samantha Tung  
BSc User Centred Design  
DCA Packaging Futures Award

25 Cameron Rowley  
Product and Furniture Design  
The Conran Shop & The Marandi Foundation:  
Designer of the Future Award

26 Billy-Jo Pierce  
Interior Design  
Anglepoise Abandon Darkness Award

27 Ellie Perry  
Product and Furniture Design  
The John Lewis & Partners Award for Design  
and Innovation: Week 2 Disciplines

28 Sophie Hickman  
Product and Furniture Design  
The Habitat Future Design Award: Furniture, Product,  
Industrial & Spatial Design

29 Phoebe Lewis  
Design for Industry  
Colour In Design Award: Week 2 Disciplines

30 Ashleigh Blades  
Illustration with Animation  
Hallmark Award: Week 2 Disciplines

31 Dominik Bondicov  
Product and Furniture Design  
Creative Conscience Environmental Design Award

32 Lloyd Potter  
Industrial Design & Technology  
Creative Conscience Social Impact Design Award







# THROWN CONTEMPORARY CERAMICS AWARD

Seeking out the next new name in contemporary ceramics, with the winning design aiming towards an online solo exhibition in Spring 2022.

PRESENTED BY

THROWN



# CICELY PEERS

## THE ST DAVIDS COLLECTION

The St Davids Collection: Cicely Peers has long had an interest in architectural materials and detailing. The patterning and clarity of the designs of the medieval encaustic floor tiles in St Davids Cathedral, Wales served as the inspiration for this collection. Cicely's goal was to embrace the creative spirit of these tiles and, through the use of 21st century processes, create three-dimensional pattern pieces displaying comparable clarity in design.



### JUDGES COMMENT

Cicely Peer's work is a stand-out example of how innovative machine processes can be used to re-interpret and re-invent – in the case of her work literally adding another dimension to what's around us. These pieces have a presence which contains within it not only Cicely's inspiring eye for detail but also

her homage to the craftsman who have in turn inspired her. We are excited to see more of where such a mastery and refinement of these processes could take her – and in her exploration of place using these techniques, where she will take us too.

Manchester Metropolitan University  
3D Design



# THE CLOTHWORKERS' COMPANY PRINTED TEXTILE DESIGN AWARD

The Clothworkers' Company were looking for a brave, trend setting, innovative designer with a good sense of colour with a specific end use in mind, but be prepared to 'cross over' into other merchandise arenas.

PRESENTED BY





# YING (VICKY) HUANG

## WANDERING DOWN THE GARDEN PATH – JOY OF PRINT

Wandering Down the Garden Path – Joy of Print celebrates Vicky Huang's experience of walking in nature and being inspired by British botanical gardens and wild paths. It aims to appreciate the beauty of native flora and the subtle and slower movements of everyday life.



### JUDGES COMMENT

We were really impressed by Vicky's development of traditional processes, and the way she kept us excited while talking us through every stage of her project, right the way out the other side and into what she

wants to achieve in the future. She made us feel involved in her work, not just as spectators, and we know that her talent and enthusiasm is going to push her to do some inspirational things in the textile industry.

Duncan of Jordanstone College of Art & Design  
Textile Design



# THE ROMO AWARD FOR INNOVATION IN DESIGN AND COLOUR

Create an exciting and innovative series of textile, wallcovering or surface pattern designs based around the theme 'Reflection'.

PRESENTED BY

ROMO



# LOIS DAVIES

## HIRAETH

Lois Davies' work focuses on the feeling of Hiraeth, a Welsh word that has no equivalent translation in English, but is a feeling of deep homesickness, a longing, a nostalgia for a place or time that might not still be. Being isolated and stuck in our homes, we have all had time to reflect and feel hiraeth for a place or that feeling of normality. Therefore, Lois decided to create a collection of textile designs that reflect where she feels hiraeth for and others also, which is Cei Newydd, a small seaside town in Wales.



### JUDGES COMMENT

We were really impressed by Vicky's development of traditional processes, and the way she kept us excited while talking us through every stage of her project, right the way out the other side and into what she

wants to achieve in the future. She made us feel involved in her work, not just as spectators, and we know that her talent and enthusiasm is going to push her to do some inspirational things in the textile industry.

University of Wales Trinity St David  
Surface Pattern Design





# THE LIBERTY FABRICS STUDIO AWARD

Present the most interesting story through their work, from the very first concept through the journey that surprises, charms and challenges.

PRESENTED BY

**LIBERTY.**  
FABRICS



# DANIEL EMBLETON

## THE AGE OF DISCOVERY

Daniel Embleton's bold collection takes the best elements of Victorian expeditions to tropical environments and puts it into interior patterns. He has selected colours from the rich tones of the Victorian era with some modern colour schemes making the collection current and commercial. A key focus of this project is to demonstrate the biodiversity of tropical environments and make people aware of their beauty but also highlight their risk of extinction due to climate change and over exploitation.



### JUDGES COMMENT

Daniel's exploration of the Victorian tropical environment showed incredible experimentation of drawing styles, from cyanotype and etching to digital rendering.

The Liberty Fabrics studio loved his attention to detail and passion for the natural form, honouring tradition with a contemporary flair.

The Northern School of Art  
Textiles and Surface Design



# SILENTNIGHT SLEEP DESIGN AWARD

A new design concept for the traditional divan bed & headboard that can revitalise the product and resonate with a more style conscious consumer.

PRESENTED BY





# KEELY RUSSELL

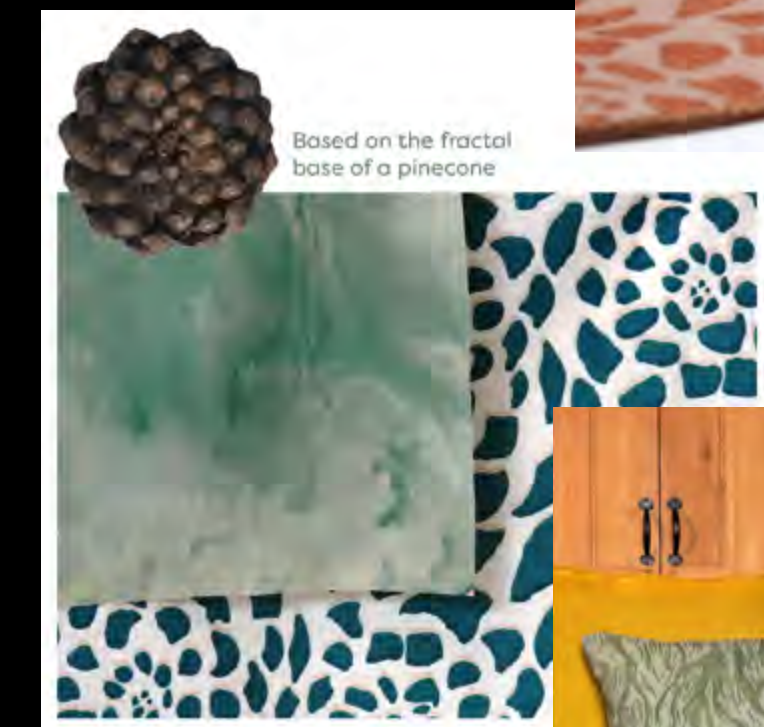
## FRACTAL RECHARGE

Keely Russell has designed a textured fractal print in a natural wool fabric with a laser etched surface, then dyed to reveal two-tone colour shades. The hues of teal she has used relate back to biophilic principles and the natural world: green and blue can be seen to be the most settling colours as humans have evolved looking at them and recognising them within nature, offering support to the consumer for a better nights' sleep.

### JUDGES COMMENT

Keely showed some really nice thinking here around utilising the principles of biophilic design to help consumers switch off into a deep sleep. This also extends to her knowledge of colour theory, opting for blue as a suitable calming choice within a sleep environment. I can imagine the final design in a commercial setting. Strong title for the project: Fractal Recharge. Also liked how

she brought a quote from Patternity into her nature development page. But particularly enjoyed seeing the process/ behind the scenes of her fragmented lino cutting design. We would like to work with Keely to explore her designs and produce a product that we can bring into commercial production for launch later in the year.



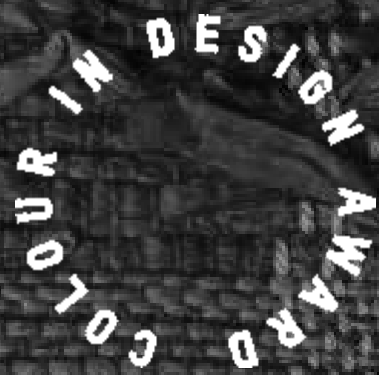
Birmingham City University  
Textile Design



# COLOUR IN DESIGN AWARD: WEEK 1 DISCIPLINES

Present work of an outstanding and original nature where colour features as a fundamental element of the design which contributes significantly to its success and has a positive effect on the user and the environment.

PRESENTED BY





# AL BATES

## CURIOUS WHILE CALM

Curious While Calm was created using influence from the outside world. In her research Al Bates found that the majority of people find that interaction with nature helps significantly to reduce their anxiety, especially during the pandemic where the outside world was our only escape from the confinement of home. Leading her to design a high-end interiors collection for those who care for quality and sustainably sourced materials.

### JUDGES COMMENT

Using colour and texture to heal ourselves and our space Al Bates's 'Curious but Calm' submission blew all the judges away with the highest levels of skill, thoughtfulness, heart and soul.



Edinburgh College of Art  
Textiles



# THE HABITAT FUTURE DESIGN AWARD: TEXTILES AND SURFACE PATTERN DESIGN

Habitat believes in beautiful design that is functional, good quality and sustainable. The brief invited designs that could sit alongside their curated collection of product and furniture.

PRESENTED BY

habitat 



Birmingham City University  
Textile Design

16

Andrea's work showed excellent craftsmanship using weaves and complex textures with a strong unified colour palette. Her presentation evoked the story, not only drawing on her heritage, but also using primary research into handcrafted

techniques from the Philippines, all of which the judges found to be a lovely personal touch. The project was also supported by a beautiful weave sample and sketchbook experimentation. Well Done Andrea!

Birmingham City University  
Textile Design



# THE JOHN LEWIS AND PARTNERS AWARD FOR DESIGN AND INNOVATION: WEEK 1 DISCIPLINES

Design a standout collection with a beautiful use of colour and a distinct, original handwriting which would work well in a home environment.

PRESENTED BY

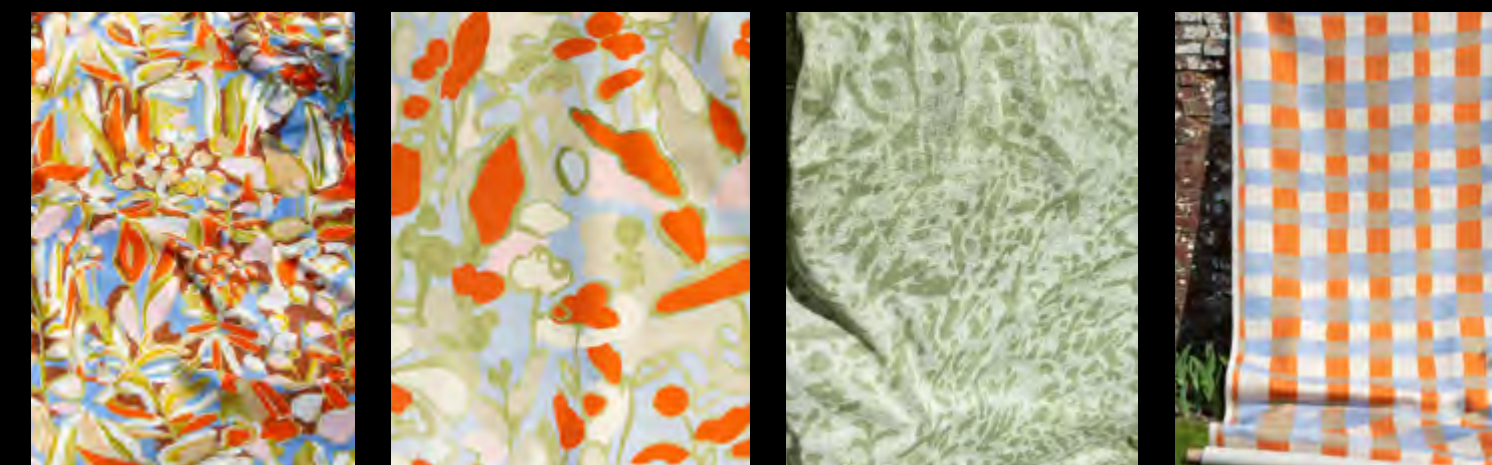
JOHN LEWIS  
& PARTNERS



# ANNA BURKE

## A GARDEN OF ONE'S OWN

This project explores the importance of outdoor space and how the garden surrounding Anna Burke's home, as well as National Trust gardens that we have been granted access to over the past year, have provided her with inspiration and solace. She aims to celebrate the garden and the outdoors, creating bold and colourful interior print designs with an abstract nature, inspired by the work of the Bloomsbury Group at Charleston House and the charming and unique interiors they have created there.



### JUDGES COMMENT

We chose Anna's collection for its joyful, uplifting mood and her beautiful use of colour. We loved the expressive handwriting and the variety of different patterns and techniques. The collection is well suited to

home interiors and overall it is a very well executed project. Our panel really enjoyed reviewing all of the entries and the standard was very impressive. Well done to all of this year's graduates!

Loughborough University  
Textiles Design & Innovation



# HALLMARK AWARD: WEEK 1 DISCIPLINES

Shift perceptions of the category 'Greetings', explore new thoughts and concepts for a future vision for Hallmark, be creative, find innovative and clever ways for the art of giving, pushing our products by reinventing the folded paper message.

PRESENTED BY





# JIAXUAN ZHONG

## LOST IN THE FOAMS

Jiaxuan Zhong's project considers social change and adjusting attitudes. As a contemporary art jeweller, Jiaxuan tries to use wearable pieces to discuss how isolating during the pandemic led to inspiration and changing attitudes to view the world in a more positive way.

### JUDGES COMMENT

We loved the physicality of Jiaxuan's work and the metaphorical use of materials. We consider connection, relationships and

time as significant to our category. Jiaxuan's innovative exploration made her our worthy winner.



Sheffield Hallam University  
Jewellery, Material and Design



# WILKO RETAIL DESIGN AWARD SURFACE PATTERN AND TEXTILES

Design a collection of textiles, surface patterns for products or prints that capture a current trend and has been translated into a design with universal appeal. The collection should demonstrate a confident use of colour with a fresh handwriting style.

PRESENTED BY

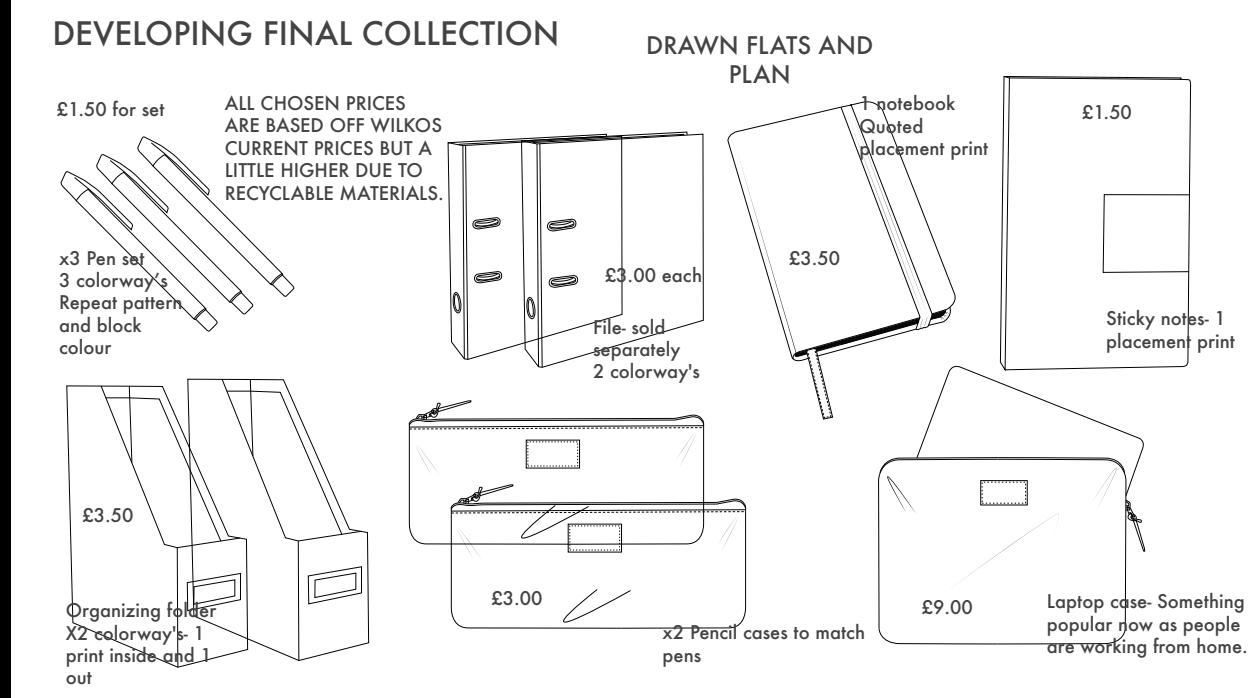
**wilko**



# OLIVIA RILEY

## EARTHS SURFACE

The purpose of this stationary collection is to help make an impact of sustainability, mainly focusing on reducing plastic and paper waste. Olivia Riley's idea is to use ocean plastic recycled materials and recycled paper to produce the range. To create her designs, she has taken inspiration from natural forms and shapes of rocks, mountains and the Earth's layers.



### FINAL COLLECTION FOR EARTHS SURFACE



### JUDGES COMMENT

Olivia Riley's project showed an excellent methodology and thinking, from initial concepts of environmental impacts to market insights and customer research to the final

ideas. Olivia's use of colour showed real confidence; her designs are well thought out, and we loved her costing and manufacturing processes considerations. Well done!

Leeds Arts University  
Textiles Design



# SANDERSON DESIGN GROUP AWARD

Explorative, hand painted artworks built into a surface pattern design for interiors resulting in at least one standout 'signature' design alongside two co-ordinating pieces.

PRESENTED BY

**SAN  
DER  
SON**  
DESIGN GROUP



# CAITLIN TRACEY

## EXPLORING BABYLON

Caitlin Tracey's project focuses on biophilic design, bringing the outside in to create natural sanctuaries inside the home. Her designs display richness and depth in colour with bright pops grounded with earthier, darker tones and she has added detail and handmade touches in motifs. Leading her to produce designs for luxurious and bespoke spaces for consumers.



### JUDGES COMMENT

The Sanderson design group is pleased to award Caitlin with a 12-month internship within the Morris and co studio. Caitlin was chosen due to her inspirational portfolio. We were impressed with her ability to develop original artwork in new mediums

and techniques, alongside the use of inspiring colour combinations and strong CAD skills. We were delighted to see her passion for her craft and we are looking forward to welcoming her within the design studio.

Leeds Arts University  
Textile Design



# ROBYN GAULD

## THE END OF THE SILK ROAD

The End of the Silk Road is an interior print collection of digitally printed fabrics and hard surfaces inspired by East Asia. It aims to convey feelings of balance and serenity. Robyn Gauld was inspired by Stefan Ormenison, the founder of 'Mind the Gap' who creates instantly recognisable and iconic art, architecture and culturally inspired designs of East Asia.



### JUDGES COMMENT

We selected Robyn for the Sanderson and Zoffany internship due to her stunning portfolio of work, showing a really sophisticated aesthetic and beautiful use of colour. We were impressed at her all around

abilities in the use of CAD software, her professionalism and confidence. We look forward to welcoming her within the design studio.

Heriot-Watt University  
Design for Printed Textiles



TECHNICAL  
DRAWINGS\RENDERS

# THE GOLDSMITHS' COMPANY AWARD

Design a piece or suite of jewellery for a formal evening event that celebrates a person or group of people who have been inspirational during the pandemic.



PRESENTED BY

The  
GOLDSMITHS'  
Company Charity



# BRIGITA BIVAINYTE

## METAMORPHOSIS OF GRAIN

Upon considering 'What makes me myself?' Brigita Bivainyte connected with her Lithuanian roots, traditions, culture, heritage and her family. Through this, she was inspired to create a jewellery piece which celebrates her culture and country with all the people who make the culture alive, including her ancestors who contributed to the extraordinary traditions which make Lithuania different.



### JUDGES COMMENT

Brigita Bivainyte from The Glasgow School of Art for "Metamorphosis of Grain": A beautiful presentation with technical drawings and models that effectively

conveyed the development processes involved in creating this bold, dynamic statement piece.

The Glasgow School of Art  
Silversmithing and Jewellery Design



# THE GOLDSMITHS' COMPANY AWARD

Design a piece or suite of jewellery for a formal evening event that celebrates a person or group of people who have been inspirational during the pandemic.

PRESENTED BY



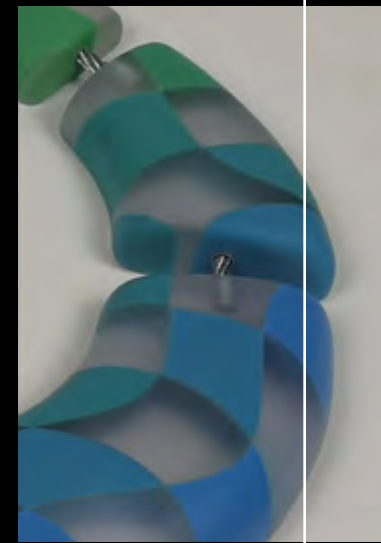
*The*  
**GOLDSMITHS'**  
*Company Charity*



# FINLAY GRANT

## SPLASH

As a competitive swimmer for nine years, Finlay Grant considered the colours, shapes and patterns seen in swimming pools. Exploring photographs of tiles lines distorted by water sparked inspiration, and Finlay wanted his work to convey as sense of depth and transparency.



### JUDGES COMMENT

Finlay Grant from Duncan of Jordanstone College of Art and Design for “Splash”: Strong visual communication and a wonderful interpretation of concept went into creating

this colourful, unique work. The judges are particularly keen to see how additional precious metals feature in future.

Duncan of Jordanstone College of Art and Design, University of Dundee  
Jewellery & Metal Design



# AARDMAN ACADEMY THE SCREENING AWARD

In association with the Aardman Academy, the Screening Award was an exciting opportunity to graduates from across the UK to showcase a selection of work embracing film, TV, video, moving image, gaming, digital media and animation.

PRESENTED BY





# SABINE BUHAIN

## LIKE IT WAS YESTERDAY

Accompanied by her friends Sam and Noah, a now jaded adult Claire sits at a bar and recounts a fond day in their childhood: the day they skipped school to play video games. Like It Was Yesterday follows their rollercoaster of a journey as elementary school kids, complete with light-hearted banter, bursts of colour, and a surrealist waltz through memory that never paints a perfect picture.



### JUDGES COMMENT

We selected Sabine because she took us on such a wonderful design and colour journey. The use of photo imagery and traditional 2D

animation created a world we immediately loved.

Anglia Ruskin University  
Animation



# MOLLIE MAKES AWARD

Create an artwork demonstrating the positive impact craft has on mental health.

PRESENTED BY

*Mollie*  
MAKES



# LUCY TURNER

## CREATIVE ABSTRACTION

Creative abstraction investigates how childlike play through art can be beneficial for adults' well-being. This project focuses on children's craft supplies imagery with simple sketches and cut and paste shapes and random doodles that create a 'fun print story'. As Lucy Turner's designs developed so did her colour palette, and she knew that this project would include a large colour palette due to the chaotic nature of the designs, but she wanted to ensure that she had a cohesive colour palette throughout the collection.

### JUDGES COMMENT

Lucy Turner's work impressed the Mollie Makes' judges with her playful use of colour and abstract shapes to reflect how childlike

play through art has a positive impact on mental health.



Leeds Arts University  
Textile Design





The Time  
WE Spent

Produced and  
Illustrated by  
Ashleigh Blades

# THE AFFINITY DIGITAL DESIGN AWARD



Catching up with friends back home on video chat, we drank and laughed together and even played bingo! - JBR



Going to the supermarket has been really fun when there's not much else to do. I like looking at all the food and sweets I could get - Jasmine

A portfolio of work to make a viewer stop and think.

PRESENTED BY





# ASHLEIGH BLADES

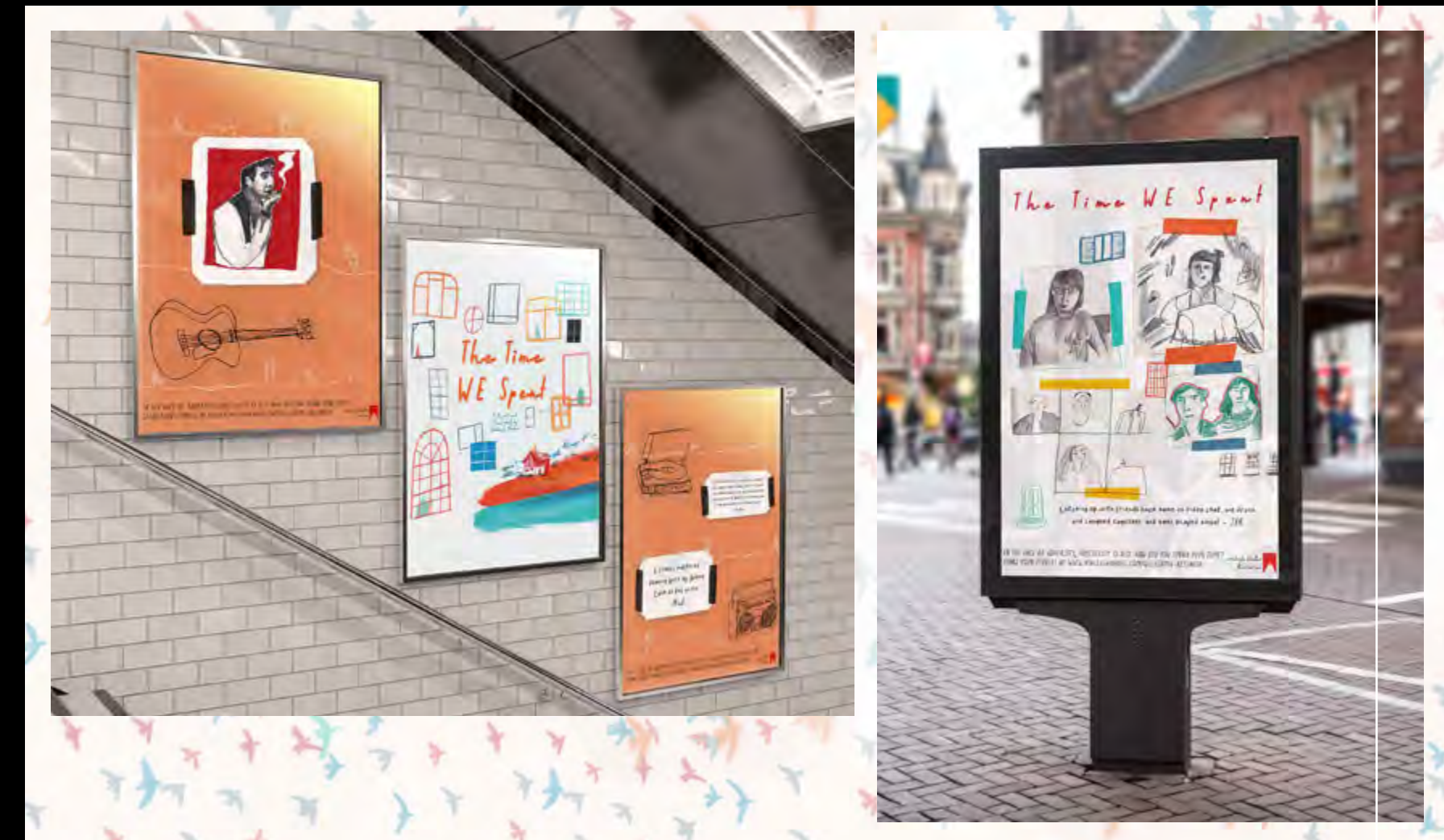
## THE TIME WE SPENT

The Time We Spent is a collection of positive stories and good experiences from the last year, collected via online submission and word of mouth. The portfolio, and in extension- the publication, urges people to take time to be present and think about the good things that have happened to them and their cherished memories in times of extreme adversity.

### JUDGES COMMENT

Beautifully illustrated with a sincere depth of warmth, The Time We Spent is a fantastic demonstration of the power of creativity and our ability to find beauty and inspiration

even in the darkest times and turn what may feel like a hopeless situation into something positive and moving.



Manchester Metropolitan University  
Illustration with Animation



A black and white photograph of a still life. In the foreground, a clear glass is partially filled with liquid. To its left is a small, dark electronic device with a circular button and a small screen. In the background, a teapot is visible. The scene is set on a light-colored surface against a dark background.

# THE JOSEPH STANNAH AWARD

A portfolio of innovative and inclusive design that promotes independent living with emphasis on demonstrating through prototypes and visualisation to show it solves the users real life problems.

PRESENTED BY

**Stannah**



# OLIVIA LATHAM

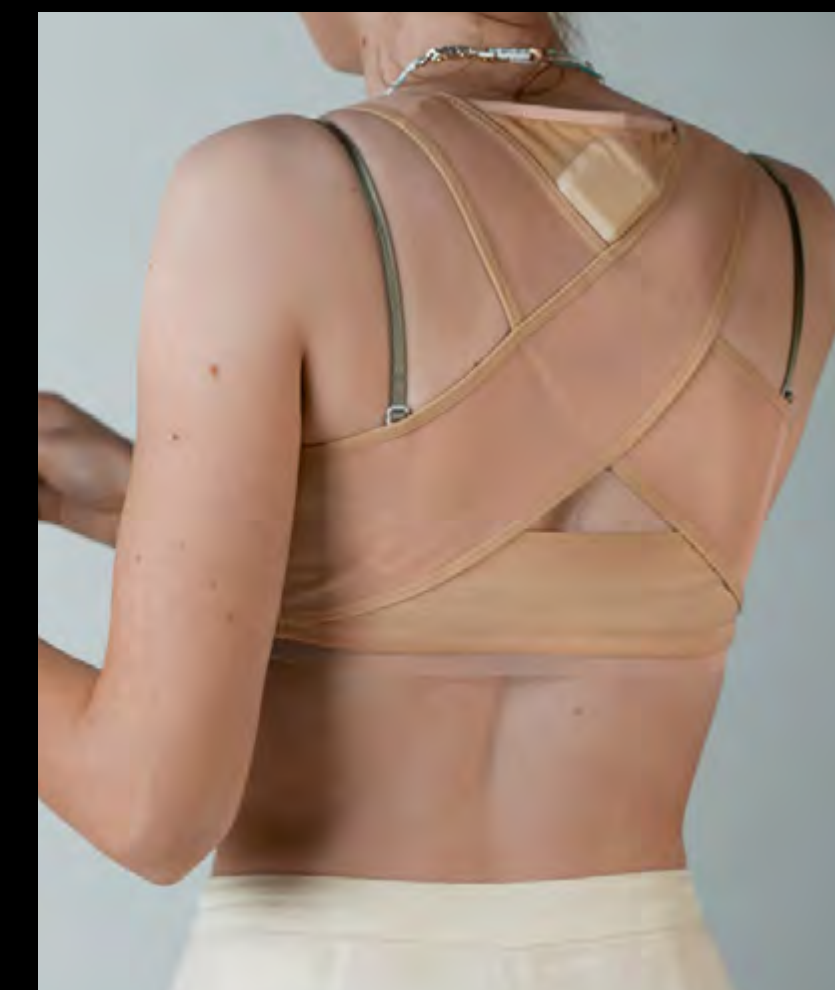
## MENO II

Menopausal women suffer from a range of symptoms throughout perimenopause and menopause. This can affect women in a variety of ways, and can hinder their working career. This has become more of a prevalent issue as women are now working to the age which they are going through menopause. This device gives physical thermal relief to manage hot flush symptoms.

### JUDGES COMMENT

Olivia showed a strong research and insights driven process and a detailed understanding of the problem. Her approach focused on

the important things such acceptance and perception, resulting in a well-considered product.



Northumbria University  
Design For Industry



# LAKELAND HOME DESIGN AWARD

Create a product which solves a problem  
experienced in the home.

PRESENTED BY

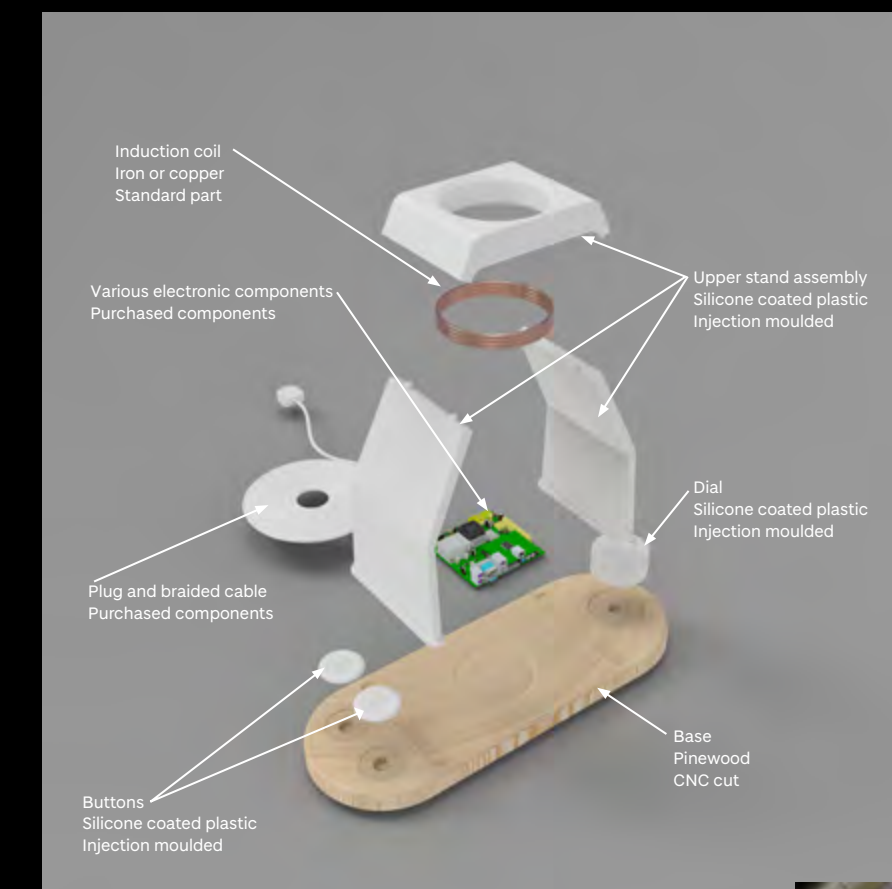
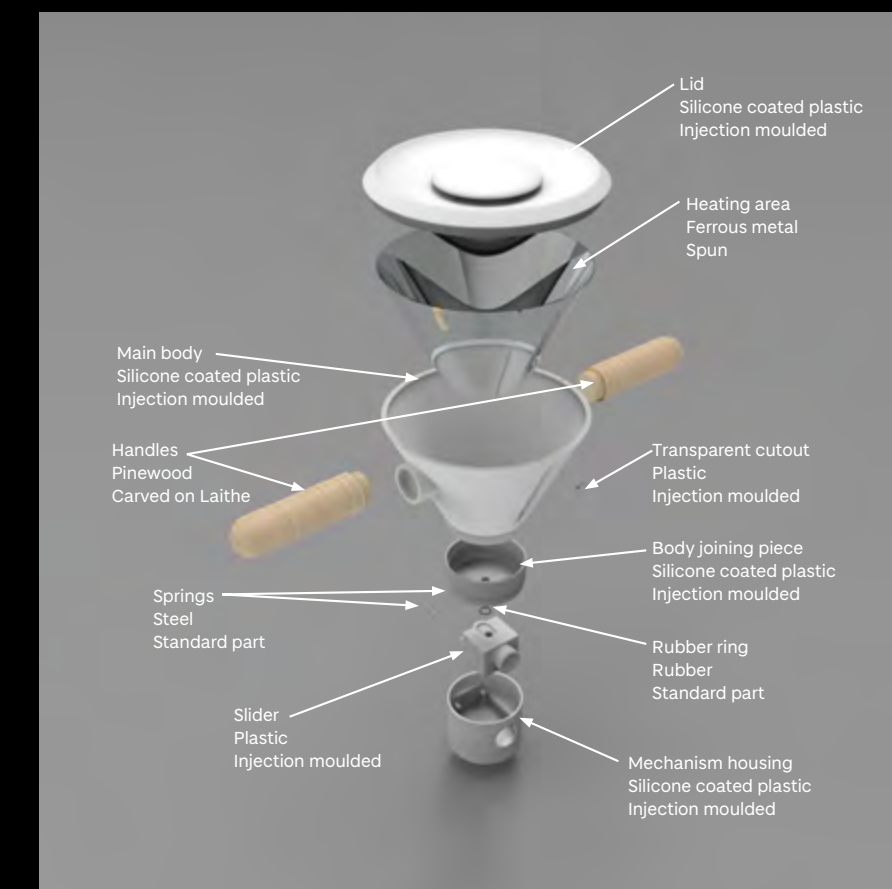
**LAKELAND**



# NICK FITZPATRICK

## INCLUSIVITEA

Over the last year, Nick Fitzpatrick realised how difficult kettles can be to use for a wide variety of people, especially elderly people, people with visual impairments and people with reduced strength or dexterity. Highlighting two core functionality problems to fix – the filling and pouring of kettles, Nick created an exciting, innovating and inclusive kettle that would not only remove obstacles for people without drawing attention to their disability, but to create something that provided a better user experience for everyone.



### JUDGES COMMENT

The Lakeland Design award goes to Nick Fitzpatrick for Inclusivitea. We chose this design as we thought he tackled some very real issues with consumer product

in the home, focusing on problems an older population may have with appliances focusing at dexterity and weight.

Duncan of Jordanstone College of Art & Design  
Product Design





# KENWOOD APPLIANCES AWARD

Apply the Trends of Company Living and Furnification to a Kitchen Food Preparation Appliance and evolve it into a product suitable for the broader home environment.

PRESENTED BY

**KENWOOD**



# MATTHEW SHEPHERD

## EKO KITCHEN

Matthew Shepherd's research into recycling food waste led him to create a stand-alone butchers block/kitchen unit that would have all the recycling bins and a place to store the Waste Wrappers, whilst de-cluttering the kitchen by centralising all the bins.

### JUDGES COMMENT

Matthew's EKO Kitchen Presentation stood out as it showed great process and thought. Due to this, the idea was realistic and showed commercial potential. His accompanying video described the concept

and showed how it is possible to prototype and communicate a solution well with limited materials in the recent Lockdown climate. Congratulations!



Edinburgh Napier University  
Product Design



# JOSEPH JOSEPH BRILLIANTLY USEFUL DESIGN AWARD

Design a product with the Joseph Joseph principles of innovation and functionality at its core.

PRESENTED BY





# ALEX D'SOUZA

## VIU

Viu is a webcam that offers a completely new way to communicate over online video, transforming any flat physical surface into a shareable platform. The webcam utilises image geometry correction to warp flat surfaces in view to appear as if the camera is placed directly above the surface, all in an aesthetically pleasing yet highly compact form that will fit under most computer monitors. The all-in-one solution fits seamlessly into users existing work-from-home setup, transforming their online communication capabilities.

### JUDGES COMMENT

Alex's project identifies a clear problem and solves it through a well-considered and beautiful executed product.

The final design has been methodically developed to a level which is both manufacturable and shows strong commercial potential.



Brunel University London  
Product Design Engineering



# FORD DESIGN AWARD

You're going on a long journey; your autonomous vehicle has come to pick you up. How would you create the interior to be interesting, comfortable and engaging for the human whilst being taken to their destination?

PRESENTED BY

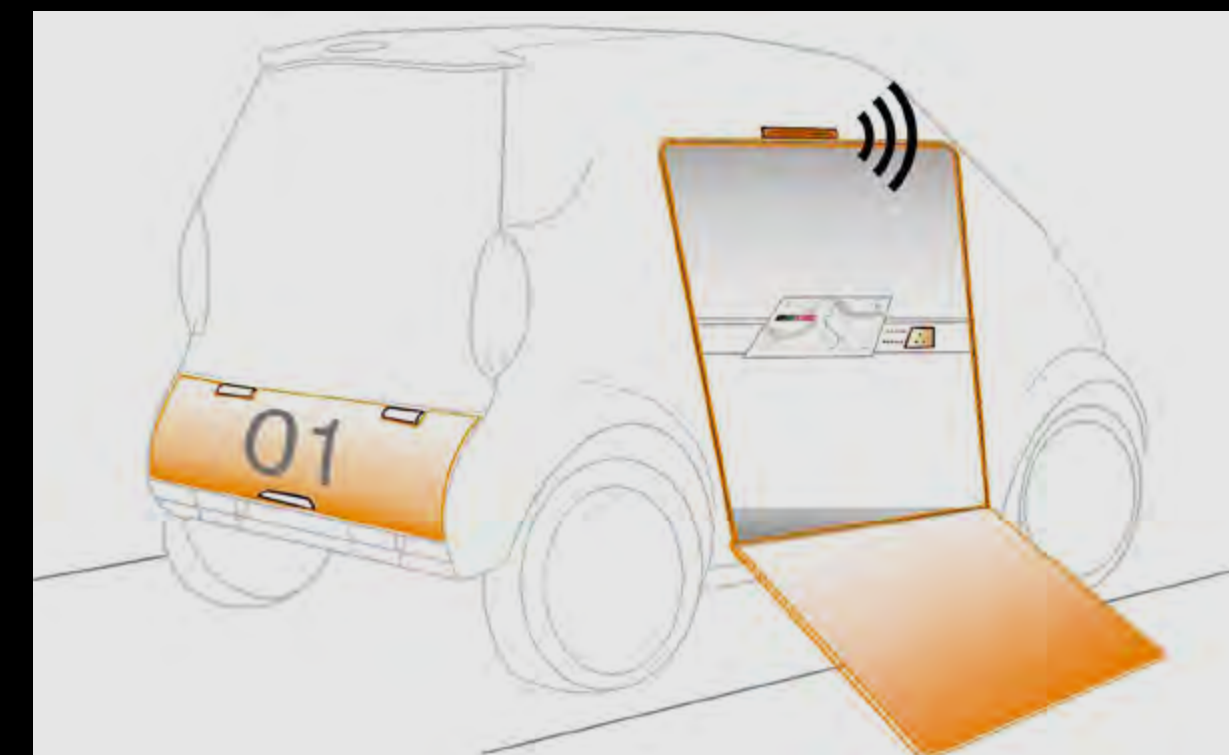
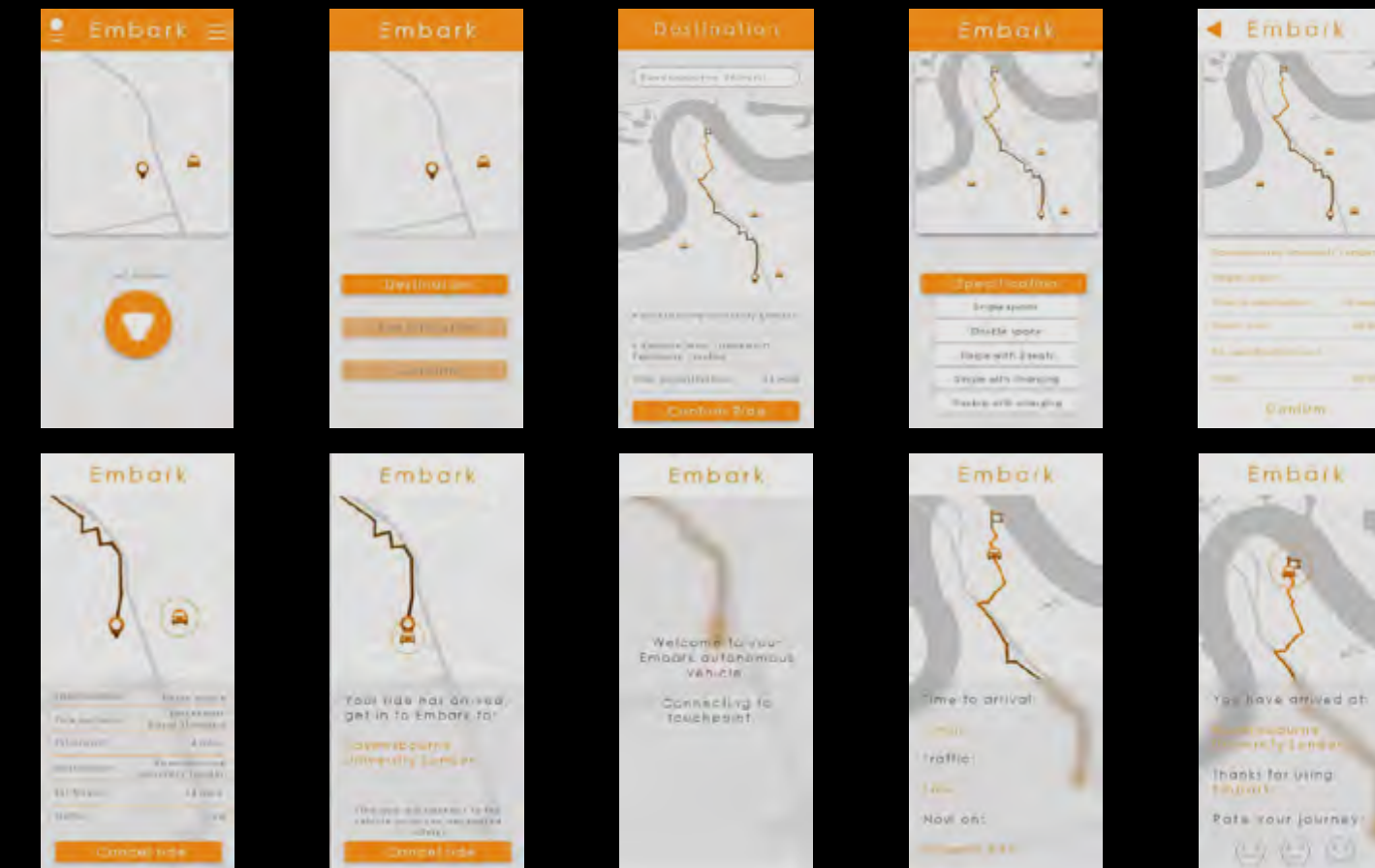




# CALUM GAMBRILL

## ACCESSIBLE & INCLUSIVE TAXI

Embark is an autonomous taxi service designed for people who have mobility impairments. It achieves this through an app that delivers an accessible autonomous vehicle to the selected location and takes the user to their desired location.



### JUDGES COMMENT

The real human rights insights identified by Calum made his entry a standout for us, as 'Embark' embraces human-centred design. He also identified an opportunity area for

autonomous vehicles, which seems a great match for the needs he defined, illustrating the incredible scope for change this technology can provide.

Ravensbourne University London  
Product & Industrial Design



# CAMBRIDGE CONSULTANTS BREAKTHROUGH DESIGN AWARD

Cambridge Consultants' offered an open call to all Product, Industrial & Spatial Design students.

PRESENTED BY





# ALICE MCCUTCHEON

## IMPROVING THE MANAGEMENT OF ADDISON'S DISEASE

Corti is a cortisol pump which improves the medication management, independence and quality of life of individuals suffering from Addison's disease. It is designed to support those needing to manage daily medication doses on the go and offers the user microneedle technology for reduced bruising, infection & pain alongside being hypoallergenic, durable & made from waterproof silicone adhesive. The Corti app supports user independence by providing reminders, alerts, cortisol curve input and symptom tracking.

### JUDGES COMMENT

Cambridge Consultants awards our "Excellence in Breakthrough Design" Award to Alice McCutcheon for her patch pump design Corti.

We were particularly impressed by the depth of the usability research and critical thinking

that went into the creation of Corti. The design is sophisticated and well executed, we could clearly see the effort put in to make this a plausible solution to the project brief. Although the final design is simple and clean, the attention to detail is outstanding, well done!



Loughborough University  
Industrial Design & Technology



# THE BELMOND AWARD

Afloat in France is about to complete an exciting renovation in 2021, Belmond aspire to provide their updated interiors with unique, crafted designs that have a genuine and innovative quality. Create any object of desire fit for one or all of Belmond's barges based in France.

PRESENTED BY





# GILES FEARON

## NATURALISTIC MINDFULNESS

The aim of this project is for the user/interactor to enjoy the naturalistic elements and pause, thus giving a sense of mindfulness. The objects fundamentals relate to the calming presence of nature and its positive attributes and can be displayed in both singular and grouped collections to provide serenity in a multitude of spaces on a Belmond Barge.



### JUDGES COMMENT

Giles' stunning glass sculpture is a fascinating piece of work that showcases a well-thought-out combination of art & craft, mindfulness and the use of glass materials. The breathing

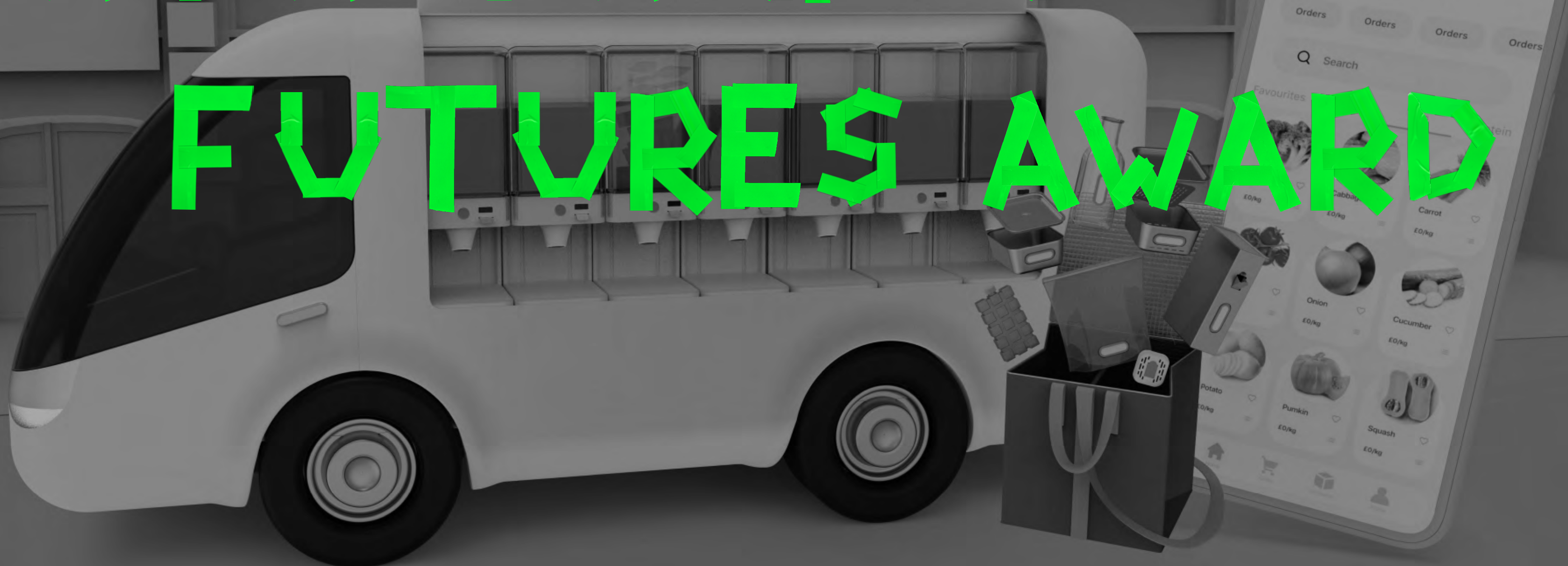
technique used to create the product is conducive to the idea of slow travel – where we take the time to focus on ourselves and cherish every moment of the journey.

Manchester Metropolitan University  
3D Design





# DCA PACKAGING FUTURES AWARD



Design a new FMCG product/packaging system to help shift consumer behaviours to a more sustainable future.

PRESENTED BY

**DCA**



# SAMANTHA TUNG

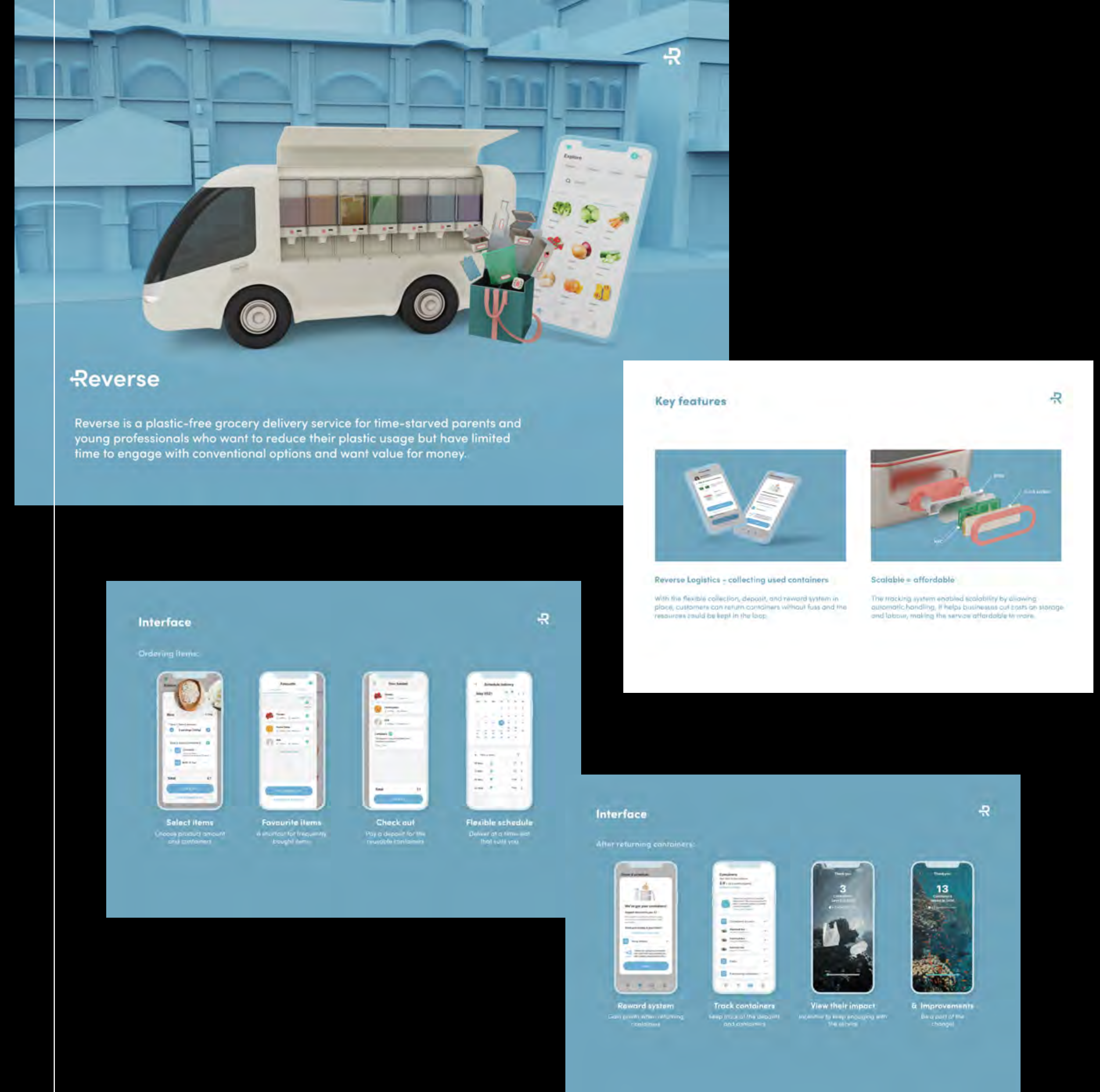
## REVERSE – A PACKAGE-FREE GROCERY DELIVERY SERVICE

Reverse is a plastic-free grocery delivery service for time-starved parents and young professionals who want to reduce their plastic usage but have limited time to engage with conventional options and want value for money. The all-in-one service is designed to maximise customer's convenience, product types and efficiency and the reusable containers keep food fresh for longer, with trackers on them to enable a scalable system.

### JUDGES COMMENT

Combining smart, universal containers with a dedicated delivery vehicle we were impressed by Samantha's strong thinking

and well-presented story of her sustainable vision, for a package-free grocery delivery service.



Loughborough University  
User Centred Design



# THE CONRAN SHOP AND THE MARANDI FOUNDATION DESIGNER OF THE FUTURE AWARD

Retail success is founded on an understanding of production design and the ability to produce consistent quality items in volume and at perceived value. Present an idea that has viable commercial potential.

PRESENTED BY

THE CONRAN SHOP





# CAMERON ROWLEY

## ONE STEP LADDER

The One Step Ladder was born out of an observation that when using step stools and ladders around the house it is usually for a brief moment and with only one step. This object aims to facilitate that behaviour while maintaining a small footprint. Intended as a domestic tool, the ladder borrows features from utilitarian objects such as gardening implements.

### JUDGES COMMENT

Terence Conran always voiced a philosophy of good design being 'plain, simple, useful' This is a good solution to a frequent

challenge, its purpose is easy to see and understand. Elegantly executed, it also serves as great looking product



Kingston University  
Product and Furniture Design





# ANGLEPOISE ABANDON DARKNESS AWARD

Given a blank sheet of paper, where  
would you take the humble task light?  
Design a task light that creates an  
environment for deep, productive  
work and supports wellbeing.

PRESENTED BY

ANGLEPOISE®



# BILLY-JO PIERCE

## INHABITED TASK LIGHT

Inhabited is a lamp centred around reducing the amount of costly waste burdening our landfills and oceans. It is a passion project – a practical, pleasing design solution made using waste materials. Billy-Jo Pierce's goal is for customers to choose their form of waste: such as lint, plastic, paper, dried flowers, wax etc. for their own lamp, as the materials they choose will create a more personal connection with it and highlight the importance of respecting the world around us.



### JUDGES COMMENT

Billy-Jo showed great resourcefulness, with interesting explorations into material development using household waste.

The concept itself then invites the user into the design and manufacture process delivering an exciting and sustainable solution.

The University of the West of England, Bristol  
Interior Design



# THE JOHN LEWIS AND PARTNERS AWARD FOR DESIGN AND INNOVATION: WEEK 2 DISCIPLINES

Our homes and how we live have changed dramatically in recent years, we are looking to recognise standout Products, Furniture and Spaces that react to these changes in a creative, innovate way.

PRESENTED BY

JOHN LEWIS  
& PARTNERS



# ELLIE PERRY TERRACOLER

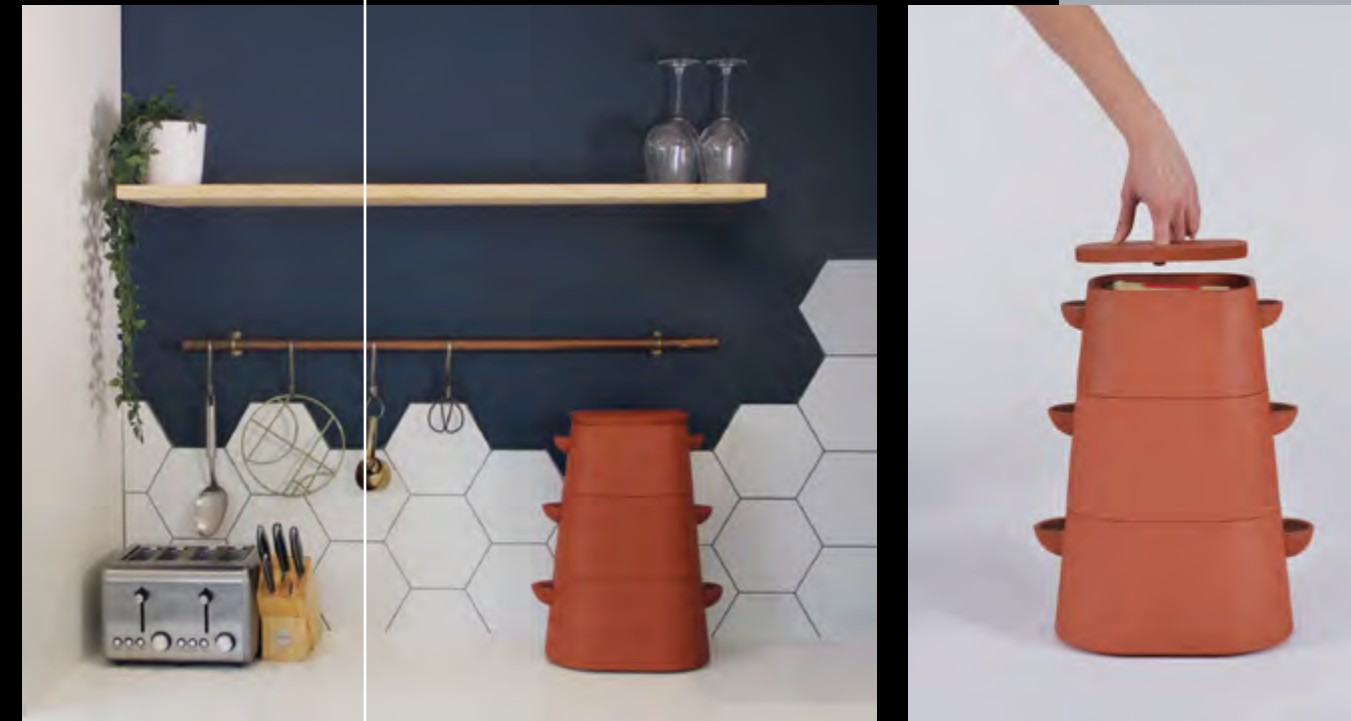
Taking influence from the Zeer Pot, an ancient method of cooling that dates back to 3000BC, the Terracooler is a food storage system designed to replace the need for a fridge. The pots are slip cast with a double wall, allowing the user to pour water through the spouts into the body.

The porosity of Terracotta draws the water out and with it, the heat from the inner pot. This process can keep the pots at a constant 6 degrees celcius. An electricity-free, modern take on an age old tradition.

## JUDGES COMMENT

We would like to award Ellie Perry and her Terra-cooler the John Lewis award. It was a great response to the briefs and we particularly loved how she referenced a

traditional technique and reinterpreted it into a product fit for the future. It was a great use of material and overall a lovely object to have in a modern and sustainable home.





# THE HABITAT FUTURE DESIGN AWARD: FURNITURE, PRODUCT, INDUSTRIAL AND SPATIAL DESIGN

Habitat believes in beautiful design that is functional, good quality and sustainable. The brief invited designs that could sit alongside their curated collection of product and furniture.

PRESENTED BY

habitat 

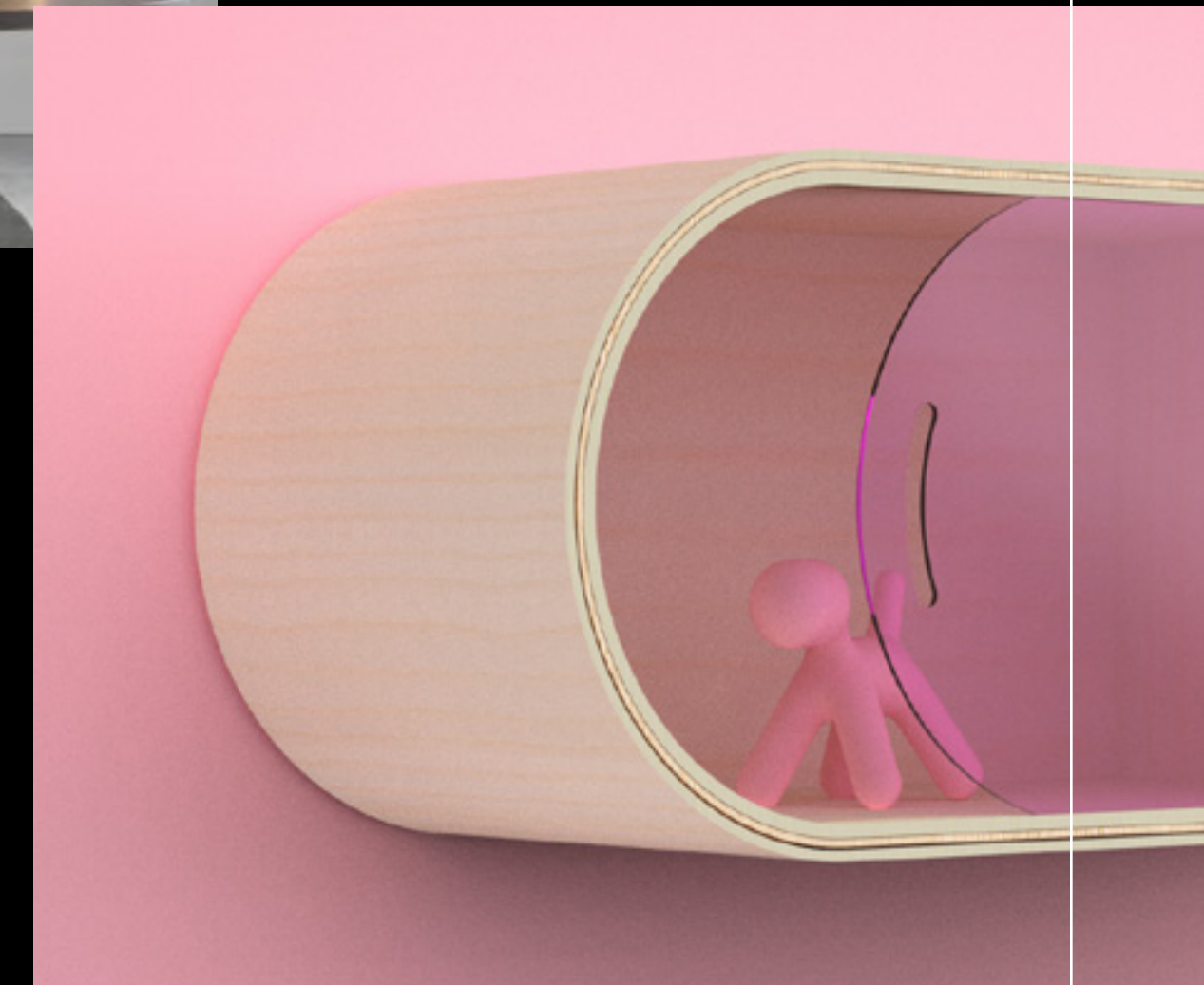


# SOPHIE HICKMAN

## ALEGRA

Alegra is a plywood moulded wall shelf, which utilises colour to enhance people's mood and mental health.

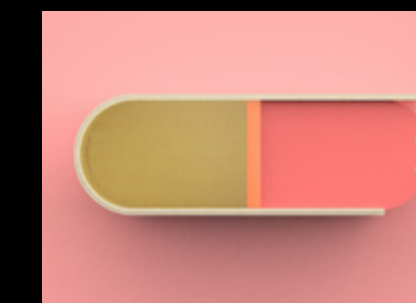
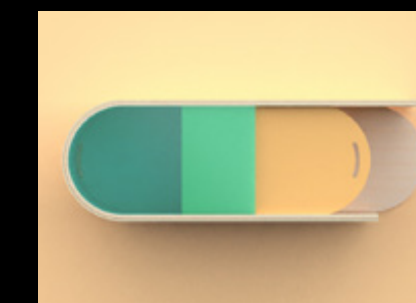
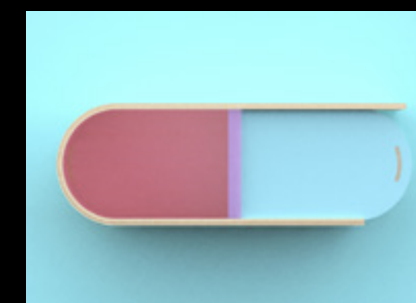
The shelf features interchangeable opaque and transparent coloured acrylic sliding doors which overlap and merge together to create different shades of colour. The combination of transparent and opaque acrylic provides privacy in some areas, whilst also allowing parts of the shelf to be exposed.



### JUDGES COMMENT

Sophie's work explored use of tactile organic forms using curved plywood to create her elegant pill shaped shelves. Her use of colour combinations explored how colour can change the mood of the user and how stress

and clutter can affect the mood in the home. We loved how the project engaged us into looking at what the potential could look like across a range of furniture for both Adults and Habitat Kids. Well done Sophie!



Birmingham City University  
Product and Furniture Design



# COLOUR IN DESIGN AWARD: WEEK 2 DISCIPLINES

Present work of an outstanding and original nature where colour features as a fundamental element of the design which contributes significantly to its success and has a positive effect on the user and the environment.

PRESENTED BY





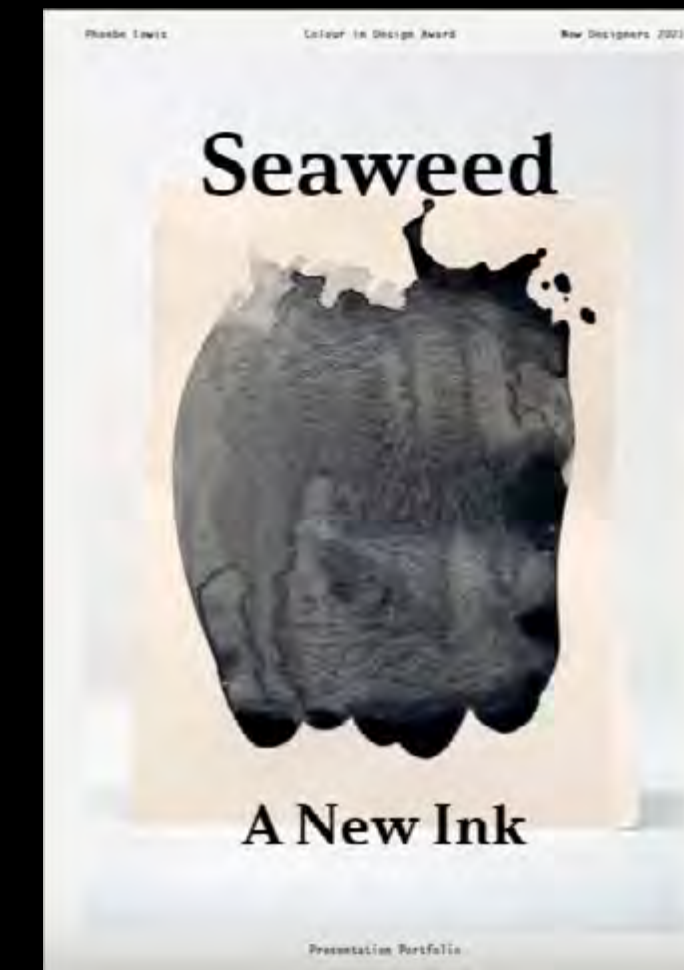
# PHOEBE LEWIS

## SEAWEED – A NEW INK

This project investigates the material potential of seaweed, in particular its pigments. It explored how these products can be integrated into society to support the stability of coastal communities. This collection aims to evoke the memories of visiting the coast, through the packaging experience, the quality of the product within, and, the story behind it. It utilises both raw seaweed and its waste products to provide a colour palette like no other.

### JUDGES COMMENT

Phoebe's coloured inks made from farmed seaweed aim to revive coastal communities and reduce environmental impact. Her outstanding submission won unanimous approval from the judges.



Northumbria University  
Design for Industry



# HALLMARK AWARD: WEEK 2 DISCIPLINES

Shift perceptions of the category 'Greetings', explore new thoughts and concepts for a future vision for Hallmark, be creative, find innovative and clever ways for the art of giving, pushing our products by reinventing the folded paper message.

PRESENTED BY





# ASHLEIGH BLADES

## JOURNEYS

Ashleigh Blades' entire portfolio of work uses colour to create friendly relatable illustrations, along with a high use of shape and space to get the viewer involved in the drawing and prompt their own reflection of the past and present. This is Ashleigh's way of promoting the idea of stopping and thinking in a rushed society where no one takes the time to stop anymore.



### JUDGES COMMENT

We loved the paper world Ashleigh created as a means to store and narrate memories and personal experiences. Her evocative

illustration and intricate three-dimensional storytelling demonstrated a delightful and lyrical response to our brief.

Manchester Metropolitan University  
Illustration with Animation



# CREATIVE CONSCIENCE ENVIRONMENTAL DESIGN AWARD

This brief provided an opportunity for designers to use their skills and talents as a creative thinker to build or build on a project that will have a positive impact on our environment and provides solutions that educate, inspire, excite and encourage new behaviours.

PRESENTED BY





# DOMINIK BONDICOV

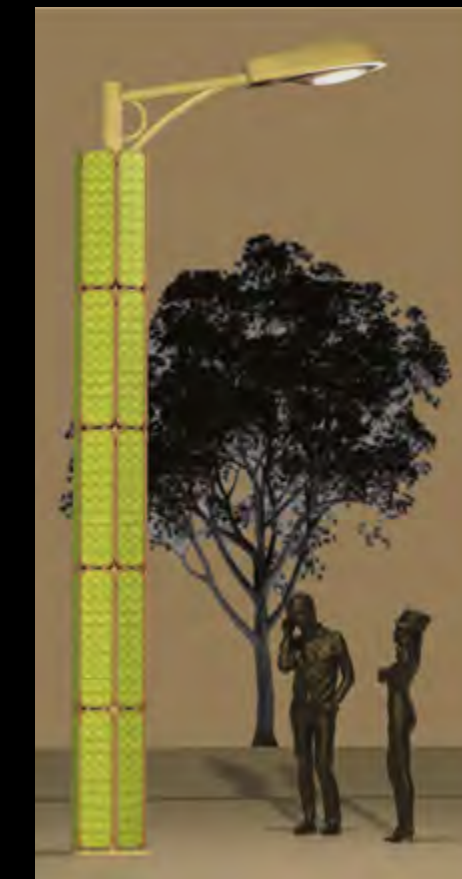
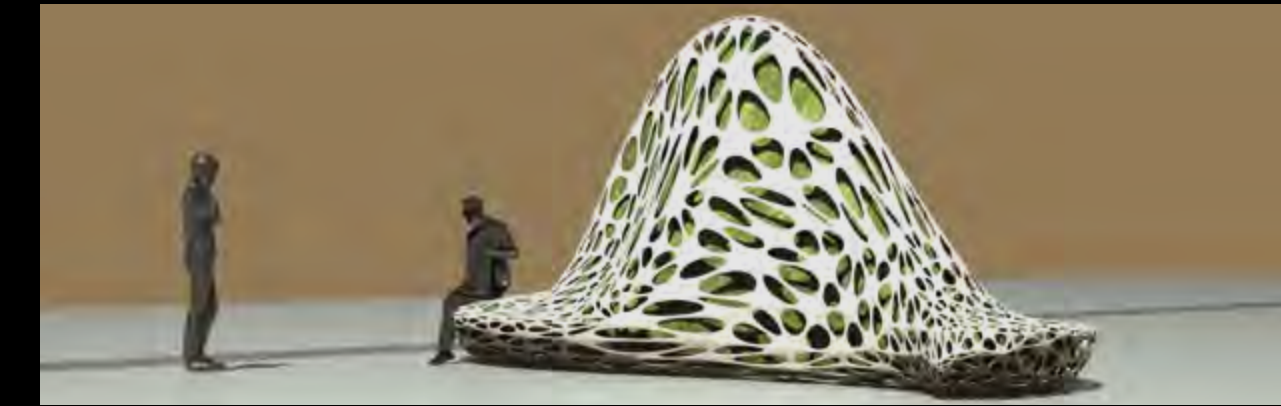
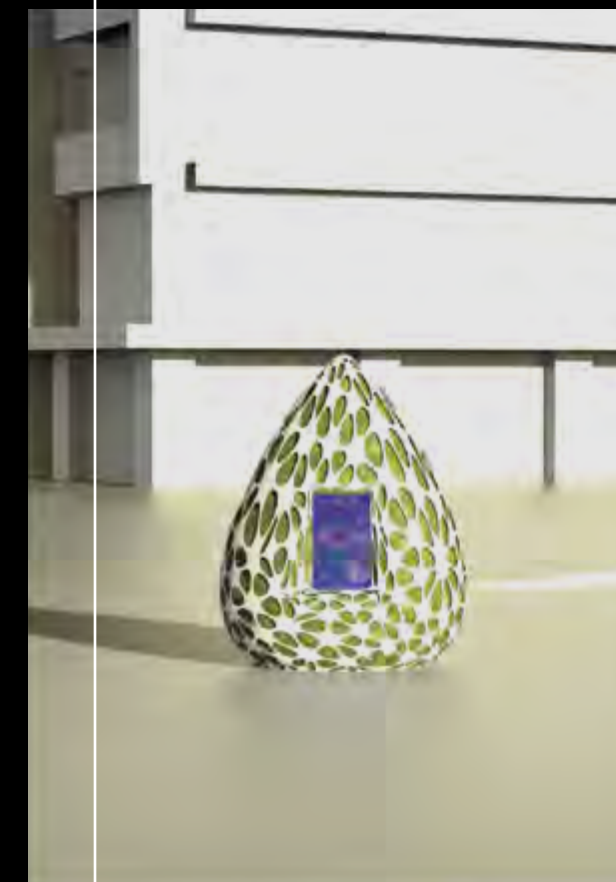
## THE GREEN RESET PROJECT

The Green Reset Project aims to bring the 51 billion tons of greenhouse gas emissions that currently are released into the atmosphere annually, down to zero. This project brings a new approach to emissions reduction by capturing carbon at the source. It is changing its structure and storing it efficiently while creating value from it. If a project like this is scaled to a certain degree, it could solve our global emissions problem within a decade.

### JUDGES COMMENT

Dominik's project was chosen for its potential impact on the environment. It is not enough for us to look at sustainable models. Carbon capture and regenerative practices are vital for our survival as a species. Dominik's design

was well researched, with prototypes and tangible outcomes. Plus a massive shout out for his ability to collaborate with industry experts and business' within this sector.



Birmingham City University  
Product and Furniture Design



# CREATIVE CONSCIENCE SOCIAL IMPACT DESIGN AWARD

This brief provided an opportunity for designers to use their skills and talents as a creative thinker to build or build on a project that will improve society for the better, including solutions and provocations that will call people to action and can lead to genuine impact.

PRESENTED BY





# LLOYD POTTER

## BYAS

BAME males are the worst affected from internal discrimination, being 81% more likely to be sent to prison for an offence than white males. BYAS is an augmented reality system for judge and jury during a trial. The headset utilises body tracking technology and projects gender neutral avatars over the top of the participants involved in the trial, thus removing any preconceived beliefs about the individuals. AI adjusts the frequency of voices to a gender neutral tone, and gender specific pronouns are replaced by neutral alternatives. With this system in place, we can be confident that the way we treat people in the criminal justice system is entirely equal and individuals will receive a fairer trial.

### JUDGES COMMENT

Lloyd's project was chosen for its potential impact on society. To look at transforming the criminal justice system is a unique, brave and ambitious act of radical reform – we believe we need brave, radical design thinking to positively change our

world. Congratulations Lloyd for thinking big, building this idea in just 10 days and questioning the way to look at the world. Why does this matter social justice and the environmental challenges we face are linked.

